

# PETIT ENFANT

Traditional French Carol

Two-part Mixed/Opt 3-part Mixed accompanied

Arranged by Ruth Elaine Schram

**BriLee Music**  
*the Voice of Choral Music*

**BriLee Music**  
**Part-by-Part**



Free MP3 rehearsal and accompaniments  
Go to: [www.BriLeeMusic.com](http://www.BriLeeMusic.com)

Range:

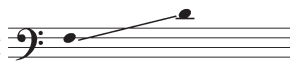
Part I



Part II



Part III



Language: French or English

Use: Holiday

Time: Approx. 1:52

\*Difficulty: Moderate

## Performance Notes

*Salangadou* is a beautiful French lullaby folk melody, to which a lovely new Christmas text has been set. The lyrics may be sung in English or French, or a combination of the two.

The melody of this song is haunting and beautiful. At the beginning and end of this arrangement, it is passed from voice to voice, giving a sensation of circular endlessness: one voice sustains while the other voice sings (or rests). The melody will be even more beautiful if phrases are shaped with an arc from beginning to end. Sustained notes should always yield to moving notes. Always allow the melody to “shine.” Always support the sound to insure excellent intonation.

Pay careful attention to dynamic contrasts and tempo indications. Throughout your performance of this lovely lullaby, think of a slowly rocking cradle, or a mother tenderly rocking her brand new baby in her arms, soothing him and lulling him to sleep. Let that gentle motion keep moving the song forward. Get softer and softer at the end but keep your tone very warm, leaving your audience with a mental picture of a loving mother and her sleeping infant, snug and content in her arms.

The French language is quite different from English, in that many of the consonants, though written, are not pronounced, and many of the vowel sounds are more nasal than those to which we are accustomed. If you choose to perform this song in French, be very careful to study the pronunciation guide so your diction is as accurate as possible.

### Pronunciation Guide:

*Petit Enfant*

puh-tee tohn-fohn

*Cher Bébé, dormez*

share beh-beh dohr-may\*\*

*Où les moutons se couchaient*

oo lay moo-tohn suh\* coo-shay

*Larmes de joie les anges pleuraient*

lahrm duh\* jawh lay zanhj pluh\*-ray

\* No English equivalent; closest vowel sound is “oo” as in “look”

\*\* The letter R is not pronounced at all like the English R. It’s more like a combination of “H” and “K,” or as the “ch” sounds in “Loch Ness.” To find the correct placement for it, open your mouth but partially close your throat (as if to gargle). Say “chah-chah-chah” as you push the air up through a partially constricted throat. Where you feel this consonant is where the correct placement for the R.

### About the Arranger

Ruth Elaine Schram wrote her first song at the age of twelve, her first octavo was published in 1988, and she became a full-time composer and arranger for choral music for church and school in 1992. Since 1990, over seventeen million copies of her songs have been purchased and she has been a recipient of the ASCAP Special Award. Her songs appear on thirty albums (four of which have been Dove Award Finalists) and numerous children’s videos. Her songs have also appeared on such diverse television shows as “The 700 Club” and HBO’s acclaimed series *The Sopranos*.

Ruthie began piano and theory lessons at the age of five. She studied music at Lancaster Bible College and Millersville State College and taught Elementary Music in Pennsylvania for several years. She currently lives in Birmingham, Alabama. Her current website is [choralmusic.com](http://choralmusic.com).

# Petit enfant

(Tiny Babe)

3

for Two-Part Mixed Voices or

Optional Three-Part Mixed Voices with Piano\*

Words by

RUTH ELAINE SCHRAM

Salangadou, French Folk Song

Arranged by Ruth Elaine Schram

With freedom ♩ = c. 80

Piano

*mp*

Part 1

(and 2) *mp*

Pe-tit En - fant,  
O Ti - ny Babe,

Pe-tit En - fant,  
O Ti - ny Babe,

Part 3

*mp*

Pe-tit En - fant,  
O Ti - ny Babe,

Pe-tit En -  
O Ti - ny

13

Pe-tit En - fant,  
O Ti - ny Babe,

fant,  
Babe,

Où les mou-tons  
Here a-mong the

*mf*

*mf*

\* For performance by Two-Part Mixed Voices, omit Part 2 (alto notes).

Copyright © 2014 BLP Choral Music (ASCAP)

International Copyright Secured.

All rights reserved, including performance rights.

Printed in the U.S.A.

18

*poco rall.**mf**dim.*

Cher Bé - bé, dor - mez, dor - mez, \_\_\_\_\_  
 Pre-cious Ba - by, go to sleep, \_\_\_\_\_

dor - mez. \_\_\_\_\_  
 to sleep. \_\_\_\_\_

se cou - chaient, \_\_\_\_\_  
 lambs and sheep, \_\_\_\_\_

dor - mez. \_\_\_\_\_  
 to sleep. \_\_\_\_\_

*poco rall.**dim.*

23

*a tempo**p**mp*

Pe-tit En - fant, \_\_\_\_\_  
 O Ti - ny Babe, \_\_\_\_\_

Pe-tit En - fant, \_\_\_\_\_  
 O Ti - ny Babe, \_\_\_\_\_

*a tempo**p**mp*

29

Pe-tit En - fant. \_\_\_\_\_  
 O Ti - ny Babe. \_\_\_\_\_

Pe-tit En - fant. \_\_\_\_\_  
 O Ti - ny Babe. \_\_\_\_\_

34

*mf* Pe - tit En -  
O Ti - ny

*mf* Pe - tit En -  
O Ti - ny

*cresc.* *mf*

38

fant, Pe - tit En - fant, Pe - tit En -  
Babe, O Ti - ny Babe, O Ti - ny

fant, Pe - tit En - fant, Pe - tit En -  
Babe, O Ti - ny Babe, O Ti - ny

42

fant, Pe - tit En - fant,  
Babe, O Ti - ny Babe,

fant, Pe - tit En - fant,  
Babe, O Ti - ny Babe,

46

*rall.*

Larmes de joie les anges pleur-aient. Cher Bé - bé, dor - mez, dor - mez, \_\_\_\_\_  
 Tears of joy the ang - els weep. Pre - cious Ba - by, go to sleep, \_\_\_\_\_

Larmes de joie les anges pleur-aient. Cher Bé - bé, dor - mez, dor - mez, \_\_\_\_\_  
 Tears of joy the ang - els weep. Pre - cious Ba - by, go to sleep, \_\_\_\_\_

50

\_\_\_\_\_ dor - mez, \_\_\_\_\_ dor - mez. *mp*  
 \_\_\_\_\_ to sleep. \_\_\_\_\_ to sleep.

\_\_\_\_\_ dor - mez, \_\_\_\_\_ dor - mez. *mp*  
 \_\_\_\_\_ to sleep. \_\_\_\_\_ to sleep.

8va-----  
*mp*  
 Red.

54 *a tempo*

*mp*  
 Pe - tit En - fant, \_\_\_\_\_ Pe - tit En - fant, \_\_\_\_\_  
 O Ti - ny Babe, \_\_\_\_\_ O Ti - ny Babe, \_\_\_\_\_

*mp*  
 Pe - tit En - fant, \_\_\_\_\_  
 O Ti - ny Babe, \_\_\_\_\_

*a tempo*

# *BriLee Music*

*the Voice of Choral Music*

BriLee Music, founded by the late Brian Busch in 1997, is the leader in publishing choral music written specifically for the developing middle school and junior high singer.

With writing guidelines carefully developed by Brian, teachers who buy from the BriLee catalog know they will always find the following in music written by BriLee composers:

Range appropriate – specifically for the adolescent changing voice  
Moderate in length  
Interesting, appealing and varied texts  
Accessible accompaniments

Writers for BriLee are among the most outstanding and respected in their field. The music is written, arranged and edited to meet a wide range of performance needs. The standard of musical excellence we present in each choral work is designed to meet the challenges faced by teachers and conductors all over the world who wish to offer quality, accessible repertoire to their ensembles.

## ***BriLee Music*** **Part-by-Part**

Free MP3 rehearsal and accompaniments

Go to: [www.BriLeeMusic.com](http://www.BriLeeMusic.com)

Part-by-Part resources were created to allow you, the busy choral director, more time to do the things you need to do to be successful in rehearsal and performance.

Download the following FREE resources and use them to help you TEACH your singers.



- Part-dominant recordings allow your singers to sing along with their part while hearing the other voices in the background.
- Full chorus recordings allow your singers to see and hear the music at the same time for greater insight.
- Professional accompaniments can be used for rehearsal or performance.

***BriLee Music***  
*the Voice of Choral Music*

**BL823 — \$1.80 USA**



6 72405 00823 5

Exclusively Distributed by  
**CARL FISCHER®**  
[www.carlfischer.com](http://www.carlfischer.com)